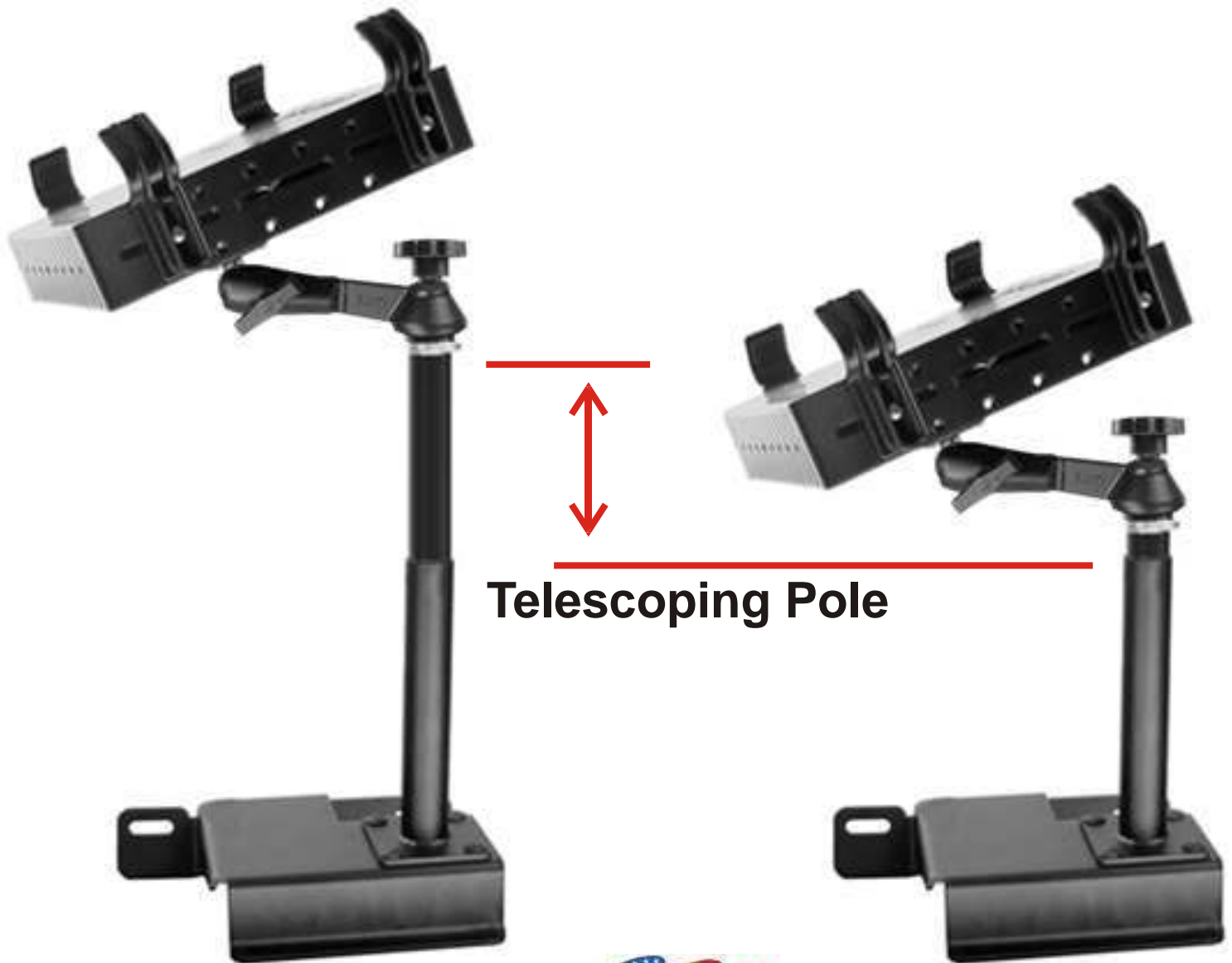


RAM[®] Tele-Pole[™] Systems

Pat. Pend.

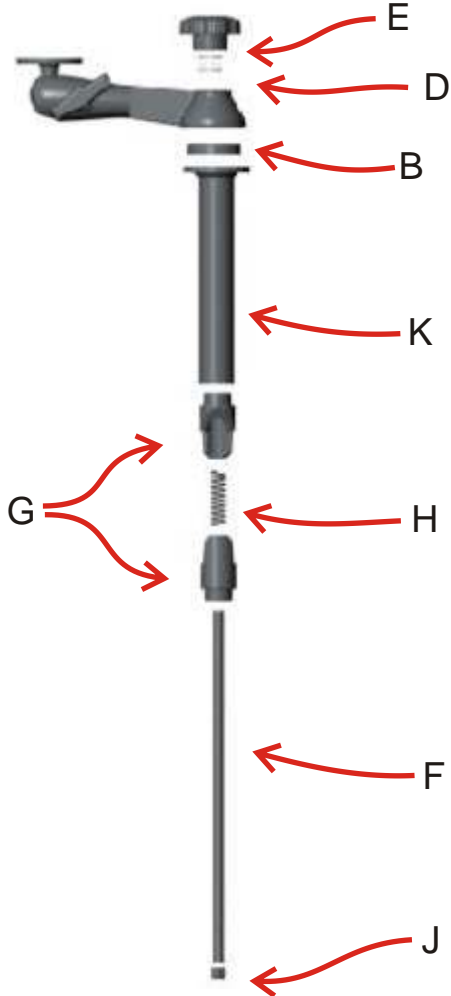
RAM Telescoping Pole Systems will provide quick, easy adjustment for varying height requirements. Simply give a twist of the knob and the pole will slide up or down. Then twist the knob again and it will lock the pole solid. This unique patent pending design is the first of it's kind and outperforms all other previous designs. The RAM Base with Tube comes stock in 4 different lengths. For an even more custom installation, they may be easily cut with a hack saw to a more desired length. Telescoping ranges will depend on the tube length, yet ranges of 6" to 12" are common. RAM Telescoping Pole Systems are fully compatible with the hundreds of other RAM Components so mounting configurations are only limited by your imagination.



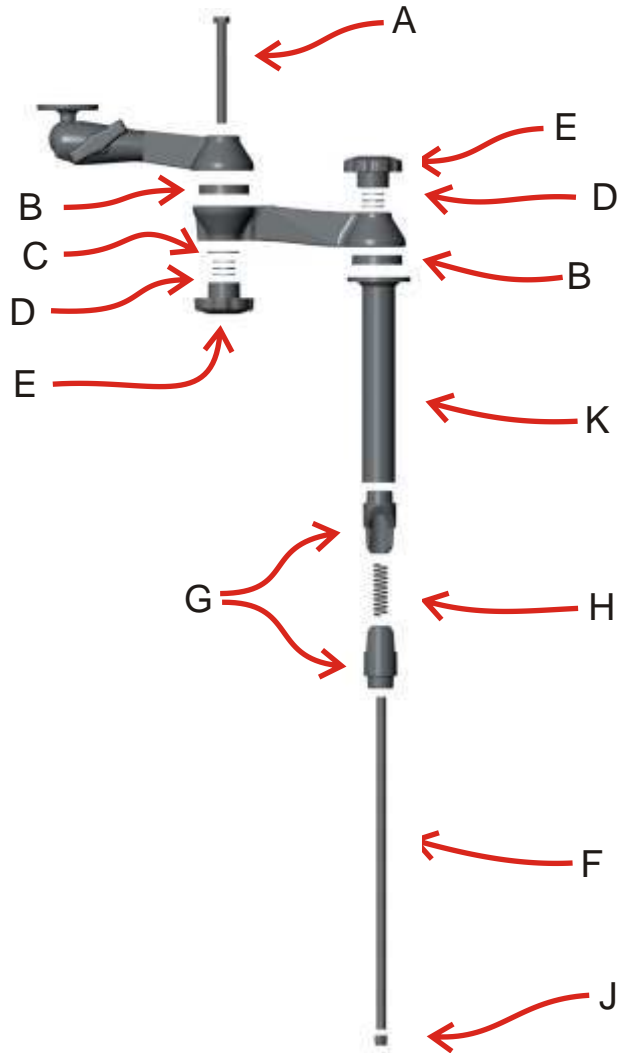
RAM® Upper Tele-Pole™ Assembly Instructions

Pat. Pend.

OPTION ONE SINGLE ARM



OPTION TWO DOUBLE ARM



Parts Index

- A. 3/8" DIA. HEX BOLT
- B. RUBBER WASHER
- C. 3/8" ID X 1 1/4" OD WASHER
- D. THRUST WASHER (SEE DETAIL AA)
- E. 2 1/2" DIA. PLASTIC KNOB
- F. THREADED ROD
- G. WEDGE CASTING
- H. SPRING
- J. 3/8" HEX NYLOCK NUT
- K. UPPER TUBE



3/8" ID X .80" OD STEEL WASHER

3/8" ID BALL BEARING WASHER

3/8" ID X .80" OD STEEL WASHER



Detail AA

THRUST WASHER ASSEMBLY

Part Index: D

National Products, Inc., 1205 S. Orr St., Seattle, WA 98108, (206) 763-8361 www.RAM-MOUNT.com

This document, including images, may not be reproduced partly or fully without the expressed written consent of National Products, Inc.